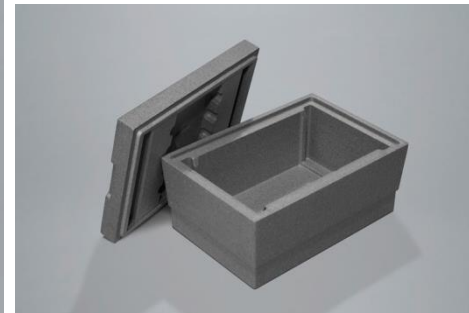


Thermo Boxes

DELIVERY PROGRAM - AS AT MARCH 2019 -



Size	Name	Inner volume in liters	Useable Volume in mm (l x w x h)	Outer Dimensions in mm (l x w x h)	Wall thickness in mm	Art. No.	Notes	Availability
	EPS-Box 0,6 l	0,6 liters	ca. 120 x 120 x 40	ca. 145 x 145 x 80	ca. 12,5	R 00447-0		on short call
	EPS-Box 0,7 l	0,7 liters	ca. 118 x 98 x 60	ca. 144 x 124 x 86	ca. 13,0	R 00554-0		on request*
	EPS-Box 1,0 l	1,0 liters	ca. 125 x 55 x 145	ca. 227 x 157 x 245	ca. 50,0	R 11102		on short call
	EPS-Box 1,1 l	1,1 liters	ca. 130 x 100 x 85	ca. 165 x 135 x 110	ca. 17,5	L 59051-0		on short call
	EPS-Box 1,5 l	1,5 Liter	Ø ca. 88	ca. 120 x 120 x 295		R 02744-0	Neu! Zur Aufnahme einer 1 Liter Flasche	on request*
	EPS-Box 1,8 l	1,8 liters	ca. 200 x 110 x 80	ca. 260 x 170 x 135	ca. 30,0	R 00456-0		on short call
	EPS-Box 1,9 l	1,9 liters	ca. 240 x 115 x 70	ca. 300 x 175 x 130	ca. 30,0	L 59053-0		on short call
	EPS-Box 2,0 l	2,0 liters	ca. 238 x 183 x 46	ca. 308 x 253 x 118	ca. 35,0	L 59058-0		on request*
	EPS-Box 2,6 l	2,7 liters	ca. 140 x 140 x 135	ca. 200 x 200 x 210	ca. 30,0	R 02222-0		on short call
	EPS-Box 2,9 l	2,9 liters	ca. 230 x 182 x 70	ca. 274 x 224 x 110	ca. 22,0	L 59052-0		on request*
	EPS-Box 3,1 l	3,1 liters	ca. 200 x 115 x 135	ca. 260 x 170 x 190	ca. 30,0	R 01484-0		on short call
	EPS-Box 3,4 l	3,4 liters	ca. 175 x 150 x 130	ca. 235 x 210 x 190	ca. 30,0	R 02538-0		on short call
	EPS-Box 3,5 l	3,5 liters	ca. 228 x 178 x 85	ca. 260 x 210 x 115	ca. 16,0	R 02414-0		on short call
	EPS-Box 3,7 l	3,7 liters	ca. 240 x 117 x 130	ca. 300 x 177 x 190	ca. 30,0	L 59050-0		on short call
	EPS-Box 3,7 l	3,7 liters	ca. 238 x 183 x 85	ca. 308 x 253 x 155	ca. 35,0	L 59056-0		on request*
	EPS-Box 3,8 l	3,8 liters	ca. 125 x 125 x 250	ca. 203 x 203 x 332	ca. 39,0	R 11067-G		on request*
	EPS-Box 4,4 l	4,4 liters	ca. 210 x 140 x 150	ca. 253 x 183 x 190	ca. 21,5	S 08130-0		on short call
	EPS-Box 4,5 l	4,5 liters	ca. 200 x 150 x 150	ca. 340 x 290 x 290	ca. 70,0	R 02484-0	Insertion of 2 EPS-cut outs possible for using of max. 2 cooling elements	on short call
	EPS-Box 4,6 l	4,6 liters	ca. 175 x 175 x 150	ca. 265 x 265 x 245	ca. 45,0	R 10423-0		on short call
	EPS-Box 4,7 l	4,7 liters	ca. 270 x 140 x 125	ca. 330 x 200 x 185	ca. 30,0	R 10982		on request*
	EPS-Box 4,9 l	4,9 liters	ca. 140 x 140 x 250	ca. 200 x 200x 325	ca. 30,0	R 11020-G		on short call
	EPS-Box 5,0 l	5,0 liters	ca. 315 x 200 x 79	ca. 355 x 240 x 114	ca. 20,0	R 03223-2	consists of two same parts	on request*
	EPS-Box 5,2 l	5,2 liters	ca. 180 x 160 x 180	ca. 222 x 202 x 225	ca. 21,0	S 08152-0		on short call
	EPS-Box 5,4 l	5,4 liters	ca. 305 x 210 x 85	ca. 365 x 270 x 145	ca. 30,0	R 13738-G	extra frame available with a height of 100 mm for cooling elements (# 2912)	on request*
	EPS-Box 5,9 l	5,9 liters	ca. 260 x 150 x 150	ca. 380 x 270 x 270	ca. 60,0	R 02302-0		on request*
	EPS-Box 5,9 l	5,9 liters	ca. 240 x 190 x 130	ca. 320 x 255 x 205	ca. 40,0	R 01165-0		on short call
	EPS-Box 6,0 l	6,0 liters	ca. 238 x 183 x 137	ca. 308 x 253 x 210	ca. 35,0	L 59057-0		on request*
	EPS-Box 6,5 l	6,5 liters	ca. 215 x 195 x 155	ca. 300 x 285 x 235	ca. 42,5	R 11022-G		on short call
	EPS-Box 7,4 l	7,4 liters	ca. 270 x 165 x 165	ca. 330 x 225 x 225	ca. 30,0	S 08480-0		on short call
	EPS-Box 7,5 l	7,5 liters	ca. 228 x 178 x 185	ca. 260 x 210 x 205	ca. 16,0	R 11257-G		on short call

Size	Name	Inner volume in liters	Useable Volume in mm (l x w x h)	Outer Dimensions in mm (l x w x h)	Wall thickness in mm	Art. No.	Notes	Availability
MEDIUM - M -	EPS-Box 7,6 l	7,6 Liter	∅ ca. 174	ca. 222 x 222 x 185		R 02745-0	Neu! Zur Aufnahme einer 5 Liter Flasche	on request*
	Neopor-Box 8,1 l	8,1 liters	ca. 350 x 180 x 130	ca. 450 x 280 x 230	ca. 50,0	R10592		on request*
	EPS-Box 8,3 l	8,3 liters	ca. 238 x 183 x 191	ca. 308 x 253 x 262	ca. 35,0	L 59059-0		on short call
	EPS-Box 8,4 l	8,4 liters	2x ca. 270 x 107 x 145	ca. 320 x 285 x 190	ca. 25,0	S 10758	the inside is divided with a separator into two pockets with 4.2 liters each pocket	on request*
	EPS-Box 8,4 l	8,4 liters	ca. 315 x 200 x 134	ca. 355 x 240 x 166	ca. 20,0	L/R 59055-0		on short call
	EPS-Box 9,1 l	9,1 liters	ca. 275 x 195 x 170	ca. 335 x 255 x 230	ca. 30,0	R 01459-0		on short call
	EPS-Box 9,2 l	9,2 liters	ca. 270 x 235 x 145	ca. 320 x 285 x 190	ca. 25,0	S 10757	the inside can be divided with a separator into two pockets with 4.2 liters each pocket	on short call
	EPS-Box 9,3 l	9,3 liters	ca. 300 x 300 x 300	ca. 210 x 210 x 210	ca. 45,0	S 11033	NEW!	on request*
	EPS-Box 10,1 l	10,1 liters	ca. 205 x 205 x 240	ca. 285 x 285 x 315	ca. 40,0	R 02142-0		on short call
	EPS-Box 10,1 l	10,1 liters	ca. 205 x 205 x 240	ca. 290 x 290 x 320	ca. 42,5	R 11236-G	outer dimension incl. carton, P650 pre-validated with UN 3373 carton (Box 02142-0)	on short call
	EPS-Box 10,1 l	10,1 liters	ca. 210 x 210 x 230	ca. 350 x 350 x 370	ca. 70,0	R 11066-G		on short call
	EPS-Box 11,0 l	11,0 liters	ca. 228 x 178 x 270	ca. 260 x 210 x 300	ca. 16,0	R 02415-0		on short call
	EPS-Box 11,6 l	11,6 liters	ca. 305 x 190 x 200	ca. 405 x 290 x 300	ca. 50,0	R 03152-0		on request*
	EPS-Box 11,8 l	11,8 liters	ca. 315 x 200 x 188	ca. 355 x 240 x 220	ca. 20,0	R 03227-2	consists of two same parts	on request*
	EPS-Box 12,1 l	12,1 liters	ca. 290 x 190 x 220	ca. 367 x 267 x 320	ca. 38,5	R 01777-0	Insertion of 2 EPS-cut outs possible for using of max. 3 cooling elements	on short call
	EPS-Box 12,2 l	12,2 liters	ca. 238 x 183 x 281	ca. 308 x 253 x 353	ca. 35,0	L/R 59060-0		on short call
	EPS-Box 12,8 l	12,8 liters	ca. 354 x 232 x 156	ca. 405 x 290 x 200	ca. 25,0	R 01843-0	consists of two same parts	on short call
	EPS-Box 12,8 l	12,8 liters	ca. 305 x 210 x 200	ca. 365 x 270 x 250	ca. 30,0	R 01394-0	extra frame available with a height of 100 mm for cooling elements (# 2912)	on short call
	Neopor-Box 14,2 l	14,2 liters	ca. 315 x 245 x 185	ca. 415 x 345 x 285	ca. 50,0	R 10594		on request*
	EPS-Box 14,6 l	14,6 liters	ca. 406 x 261 x 138	ca. 470 x 325 x 200	ca. 30,0	S 10646	NEW! Includes special air floating drains for perfect cooling. Extra frame available for up to 51.6 liters useable volume.	on short call
EPS-Box 15,3 l	15,3 liters	ca. 330 x 160 x 290	ca. 420 x 220 x 350	ca. 30,0	R 00622-0	Box includes a carrying strap. The outer dimension is incl. the strap holder.	on short call	
EPS-Box 15,4 l	15,4 liters	ca. 420 x 305 x 120	ca. 480 x 365 x 180	ca. 30,0	L 59586-0	extra frame available with a height of 195 mm for 39,3 liters useable volume (# 59588)	on short call	
EPS-Box 15,8 l	15,8 liters	ca. 305 x 220 x 235	ca. 365 x 280 x 295	ca. 30,0	R 13620-G		on short call	

Size	Name	Inner volume in liters	Useable Volume in mm (l x w x h)	Outer Dimensions in mm (l x w x h)	Wall thickness in mm	Art. No.	Notes	Availability
LARGE - L-	EPS-Box 17,9 l	17,9 liters	ca. 240 x 240 x 310	ca. 360 x 360 x 430	ca. 60,0	R 01902-0		on request*
	EPS-Box 17,9 l	17,9 liters	ca. 420 x 305 x 140	ca. 480 x 365 x 185	ca. 30,0	R 02223-0	extra frame available with a height of 195 mm for 41,8 liters useable volume (#59588)	on short call
	EPS-Box 18,8 l	18,8 liters	ca. 300 x 250 x 250	ca. 400 x 350 x 350	ca. 50,0	R 01688-0		on short call
	EPS-Box 19,2 l	19,2 liters	ca. 380 x 220 x 230	ca. 520 x 360 x 335	ca. 60,0	R 13630-G	Includes special air floating drains for perfect cooling. (Wall thickness 60 mm)	on request*
	EPS-Box 19,3 l	19,3 liters	ca. 406 x 282 x 169	ca. 446 x 322 x 209	ca. 20,0	R 10981		on request*
	EPS-Box 19,7 l	19,7 liters	ca. 345 x 260 x 220	ca. 425 x 340 x 300	ca. 40,0	S 10248-0		on short call
	EPS-Box 20,5 l	20,5 liters	ca. 392 x 327 x 160	ca. 452 x 387 x 215	ca. 30,0	L 59054-0		on short call
	EPS-Box 26,3 l	26,3 liters	ca. 420 x 305 x 205	ca. 480 x 365 x 255	ca. 30,0	R 01395-0	extra frame available with a height of 195 mm for 50,2 liters useable volume (#59588)	on short call
	EPS-Box 27,0 l	27,0 liters	ca. 300 x 300 x 300	ca. 400 x 400 x 400	ca. 50,0	R 11021-G		on short call
	EPS-Box 27,5 l	27,5 liters	ca. 420 x 305 x 215	ca. 480 x 365 x 285	ca. 30,0	L 59587-0		on short call
	EPS-Box 30,2 l	30,2 liters	ca. 300 x 300 x 355	ca. 360 x 360 x 430	ca. 30,0	R 00833-4		on short call
	Neopor-Box 32,6 l	32,6 liters	ca. 400 x 340 x 240	ca. 500 x 440 x 340	ca. 50,0	R 10593		on short call
	EPS-Box 33,2 l	33,2 liters	ca. 406 x 261 x 313	ca. 470 x 325 x 375	ca. 30,0	S 10646+R	NEW! Includes special air floating drains for perfect cooling. Incl. extra frame with a height of 175 mm (#10647)	on short call
	EPS-Box 35,2 l	35,2 liters	ca. 510 x 300 x 230	ca. 570 x 360 x 290	ca. 30,0	R 13621-2		on short call
	EPS-Box 38,4 l	38,4 liters	ca. 540 x 392 x 186	ca. 585 x 435 x 232	ca. 21,5	L 54105-0		on request*
	EPS-Box 39,3 l	39,3 liters	ca. 420 x 305 x 315	ca. 480 x 365 x 375	ca. 30,0	L 59586-0+R	incl. extra frame with a height of 195 mm (#59588)	on short call
	EPS-Box 41,1 l	41,1 liters	ca. 465 x 340 x 260	ca. 565 x 440 x 370	ca. 50,0	R 02082-0		on short call
	EPS-Box 41,8 l	41,8 liters	ca. 420 x 305 x 335	ca. 480 x 365 x 380	ca. 30,0	R 02223-0+R	incl. extra frame with a height of 195 mm (#59588)	on short call
	EPS-Box 46,7 l	46,7 liters	ca. 495 x 295 x 320	ca. 545 x 345 x 380	ca. 25,0	R 01556-0		on short call
	EPS-Box 51,0 l	51,0 liters	ca. 500 x 300 x 340	ca. 600 x 400 x 440	ca. 50,0	R 02348-0		on short call
EPS-Box 51,2 l	51,2 liters	ca. 420 x 305 x 400	ca. 480 x 365 x 450	ca. 30,0	R 01395-0+R	incl. extra frame with a height of 195 mm (#59588)	on short call	
EPS-Box 51,2 l	51,2 liters	ca. 420 x 305 x 400	ca. 480 x 365 x 470	ca. 30,0	L 59587-0+R	incl. extra frame with a height of 195 mm (#59588)	on short call	
EPS-Box 51,7 l	51,7 liters	ca. 406 x 261 x 488	ca. 470 x 325 x 550	ca. 30,1	S 10646+2R	NEW! Includes special air floating drains for perfect cooling. Extra frame available for up to 51.6 liters useable volume. Incl. 2 extra frames with a height of 175 mm each (#10647)	on short call	
EPS-Box 51,7 l	51,7 liters	ca. 410 x 260 x 485	ca. 470 x 325 x 545	ca. 30,0	R 01955-0		on short call	
EPS-Box 53,7 l	53,7 liters	ca. 500 x 305 x 352	ca. 558x 363 x 410	ca. 29,0	L 59062-0	NEW!	on request*	
EPS-Box 54,6 l	54,6 liters	ca. 420 x 325 x 400	ca. 483 x 388 x 462	ca. 30,0	S 10730		on short call	

Size	Name	Inner volume in liters	Useable Volume in mm (l x w x h)	Outer Dimensions in mm (l x w x h)	Wall thickness in mm	Art. No.	Notes	Availability
EXTRA LARGE - XL -	EPS-Box 64,6 l	64,6 Liter	ca. 515 x 380 x 330	ca. 575 x 440 x 380	ca. 30,0	R/S 02529-0		on short call
	EPS-Box 71,2 l	71,2 Liter	ca. 595 x 460 x 260	ca. 715 x 580 x 380	ca. 60,0	R 13649-G		on short call
	EPS-Box 82,7 l	82,7 liters	ca. 560 x 360 x 410	ca. 600 x 400 x 440	ca. 20,0	R 01586-0		on short call
	EPS-Box 90,3 l	90,3 liters	ca. 590 x 340 x 450	ca. 690 x 445 x 560	ca. 50,0	R 02081-0		on short call
	Small Pallet Shipper 97,0 l	97,0 liters	ca. 770 x 600 x 210	ca. 890 x 720 x 430	ca. 60,0	R 13650-1	includes pallet-shoes for lift trucks	on short call
	EPS-Box 97,3 l	97,3 liters	ca. 590 x 340 x 485	ca. 650 x 405 x 545	ca. 30,0	R 01954-0		on short call
	EPS-Box 105,0 l	105,0 liters	ca. 1076 x 316 x 305	ca. 1150 x 380 x 383	ca. 25,0	R 10610		on request*
	EPS-Box 142,3 l	142,3 liters	ca. 595 x 460 x 520	ca. 715 x 580 x 640	ca. 60,0	R 10923-0		on short call
	Euro Pallet Shipper 172,0 l	172,0 liters	ca. 960 x 560 x 320	ca. 1170 x 770 x 480	ca. 60,0	R 10193		on short call
	Small Pallet Shipper 235,6 l	235,6 liters	ca. 770 x 600 x 510	ca. 890 x 720 x 740	ca. 60,0	R 10924-0	includes pallet-shoes for lift trucks	on short call
	Euro Pallet Shipper 333,0 l	333,0 liters	ca. 960 x 560 x 620	ca. 1170 x 770 x 795	ca. 60,0	R 13840-G	consists of bottom, a stackable frame and lid for easy handling	on short call
	Euro Pallet Shipper 495,0 l	495,0 liters	ca. 960 x 560 x 920	ca. 1170 x 770 x 1095	ca. 60,0	R 10705	consists of bottom, two stackable frames and lid for easy handling	on short call
	XL-Pallet-Transporter 335-1275 l	335 bis 1275 liters	ca. 1250 x 850 x 1200	ca. 1450 x 1050 x 1574	ca. 50,0	S 13000+ 13001	Pallet-Transporter for assembling of completely packed EUR-Pallets. Box consists of bottom, lid and up to 4 stackable frames for easy handling.	on short call

*depending on the purchase quantity, additional set-up costs may be incurred